



博视源企业介绍

COMPANY PROFILE

源于视觉, 不止视觉; 源至精密, 追求卓越

Originating from vision, not just vision;
Originating from precision and pursuing excellence



📍 厦门工厂：福建省厦门市集美区杏林瑶山路13-17号

📍 无锡工厂：江苏省无锡市锡山区吼山南路15号4号楼

🌐 企业官网：www.xmbsy.net

☎ 销售热线 (TEL) : 0086-592-6077810

📍 No.1Chinese factories:No.13-17, Yaoshan Road, Jimei District,Xiamen City, Fujian Province

📍 No.2Chinese factories:Building 4, No. 15, Houshan SouthRoad, Xishan District, Wuxi Ciy, Jiangsu Province

🌐 Web:www.xmbsy.net

☎ TEL:0086-592-6077810

江苏无锡 | JIANGSU WUXI



广东东莞 | GUANGDONG DONGGUAN



福建厦门 | FUJIAN XIAMEN



博视源自创立以来,始终秉承着创新与卓越的理念,历经岁月的沉淀,不断发展壮大。从简易纯视觉软件再到如今成型的高智能化AOI检测系统,亦或者非标设备完成高度自动化AOI标准机的转型,无一不证明了一个企业的生命力在于其不断创新的精神。从技术突破到业务扩展,企业的每一个进步都彰显了其坚韧与担当的精神。回顾过去,我们的成就历历在目,未来,我们期待更多辉煌。

Since its establishment, Boshi has always adhered to the concept of innovation and excellence, and has gone through the sedimentation of time, constantly developing and growing. The transformation from simple visual software to highly intelligent AOI detection systems, or from non-standard equipment to highly automated AOI standard machines, all prove that the vitality of an enterprise lies in its spirit of continuous innovation. From technological breakthroughs to business expansion, every progress of the enterprise demonstrates its spirit of resilience and responsibility. Looking back at the past, our achievements are vividly remembered, and in the future, we look forward to more glory.

目录

企业介绍 | About us

Pgae01

核心团队 | Core team

Pgae02

企业产品线 | Enterprise product line

Pgae05

模具监视器 | Mold monitor

Pgae07

AOI智能全检设备 | AOI intelligent full inspection equipment

Pgae09

一键闪测仪 | One button measuring instrument

Pgae11

通用视觉算法平台 | Universal Visual Algorithm Platform

Pgae13

定制非标自动化设备 | Designated industry non-standard automation

Pgae14

企业客户 | Enterprise Customers

Pgae15

企业介绍

About us

博视源是专业从事机器视觉系统研发、集成和服务的高新技术企业。我司自主研发并销售了多相一体智能模具监视器、多种视野的一键闪测仪、CCD算法通用平台、智能AOI全检标准机、医疗器械毛发异物检测非标机、晶圆半导体检测机等机器视觉系统,致力于为制造型企业提供更智能更精准的机器视觉解决方案。

Boshiyuan is a high-tech enterprise specializing in the R&D, integration, and service of machine vision systems. We independently develop and sell a range of machine vision products, including:Multi-phase integrated intelligent mold monitors,One-click flash measuring instruments with various FOVs (fields of view),Universal CCD algorithm platforms,Intelligent AOI (Automated Optical Inspection) standard machines,Customized medical device hair/foreign object detection systems,Wafer/semiconductor inspection equipment,Committed to innovation, we provide manufacturing enterprises with smarter and more precise machine vision solutions.



自动化车间
Automatic Workshop



模具监视器生产车间
Mold Monitor Production Workshop



精密仪器生产车间
Precision Instrument Production Workshop

企业进程 | ENTERPRISE PROCESS

2010-2011th

- 1.成立博视源机器视觉技术有限公司
- 2.推出第一代模具监视器
1. Establish Boshiyuan Machine Vision Technology Co., Ltd
2. Launch the first generation mold monitor

2012-2013th

- 1.推出第一套领先行业水平的工业一体机
- 2.推出第一套图像算法-BSY-VisionLib
- 3.无锡办事处成立
1. Launch the first set of industry-leading industrial all-in-one machines
2. Launch the first image algorithm - BSY VisionLib
3. Wuxi office established

2014-2015th

- 1.推出第二代模具监视器
- 2.东莞办事处成立
- 3.推出通用视觉检测平台
1. Launch the second generation mold monitor
2. Dongguan office established
3. Launch a universal visual inspection platform

2016-2017th

- 1.推出基于嵌入式平台的应用系统
- 2.推出基于Linux系统的物联网服务系统
1. Launch application systems based on embedded platforms
2. Launch an IoT service system based on Linux system

2018-2019th

- 1.推出第三代模具监视器
- 2.昆山办事处成立
- 3.推出二代通用视觉算法平台
1. Launch the third generation mold monitor
2. Kunshan office established
3. Launch the second-generation universal visual algorithm platform

2020-2021th

- 1.推出基于AI的检测系统
- 2.推出多款不同视野的一件闪测仪
- 3.设立无锡博视智联分工厂
- 4.东莞办事处扩张,设立实验室&展厅
1. Launch an AI based detection system
2. Launch multiple flash testers with different perspectives
3. Establish Wuxi Boshi Zhilian Branch Factory
4. Dongguan office expansion, setting up laboratories &exhibition halls

2022-2023th

- 1.推出集成了运动控制和AI深度学习的AOI检测系统
- 2.推出模块化/标准化的AOI检测标准机
1. Launch an AOI detection system that integrates motion control and AI deep learning
2. Launch a modular/standardized AOI detection standard machine

2024-2025th

- 1.推出第五代智能模具监视器
- 2.推出集成高效的柔性振动盘系统
- 3.推出可配套模具监视器使用的机边检测
- 4.推出第六代模具监视器
1. Launch the fifth generation intelligent mold monitor
2. Launch an integrated and efficient flexible vibration disc system
3. Launch machine edge detection that can be used with mold monitors
4. Launch the sixth generation mold monitor

未来还在继续

企业版图 | ENTERPRISE TERRITORY

厦门总部 | XIA MEN



无锡分部 | WU XI



公司在细分领域的模具监视系统目前已实现年销量**10000**台以上,销售和服务网络已覆盖国内**34**个省区,同时也在海外的日本、西班牙、越南、泰国、印度等国家逐步扩张中。我司在厦门、无锡均建有工厂,现在拥有全职代理商**30**家,合作经销商**50**家以上,售后服务同步覆盖,为客户设备维护提供了优质保障。

The company's mold monitoring system in segmented fields has achieved an annual sales volume of over 10000 units, and its sales and service network has covered 34 provinces and regions in China. At the same time, it is gradually expanding overseas in countries such as Japan, Spain, Vietnam, Thailand, and India. Our company has factories in Xiamen and Wuxi, and currently has 30 full-time agents and over 50 cooperative distributors. Our after-sales service covers the same area, providing high-quality guarantee for customer equipment maintenance.



核心团队 Core Team

专业经得起考量 | 专业更值得信赖

Professionalism can withstand consideration | Professionalism is more trustworthy



博视源现有团队**100+**人,其中研发技术团队**30+**人。研发核心成员基本为国内外重点大学硕士及以上学历,来自华为、美亚柏科、星网锐捷、哈工大技术研究院等知名企业,在2D/3D机器视觉、AI深度学习、精密机械控制、高精光学成像检测等有一定经验积累,拥有机器视觉领域相关经验**8年以上**,整体团队配置在同领域中处于偏上水平。

Boshiyuan currently has a team of over 100 people, including a research and development technology team of over 30 people. The core members of the R&D team are generally master's degrees or above from key universities at home and abroad, and come from well-known enterprises such as Huawei, Maya Pak Technology, Starnet Ruijie, and Harbin Institute of Technology. They have accumulated some experience in 2D/3D machine vision, AI deep learning, precision mechanical control, high-precision optical imaging and detection, and have more than 8 years of relevant experience in the field of machine vision. The overall team configuration is at an upper level in the same field.



校企合作 | SCHOOL ENTERPRISE COOPERATION

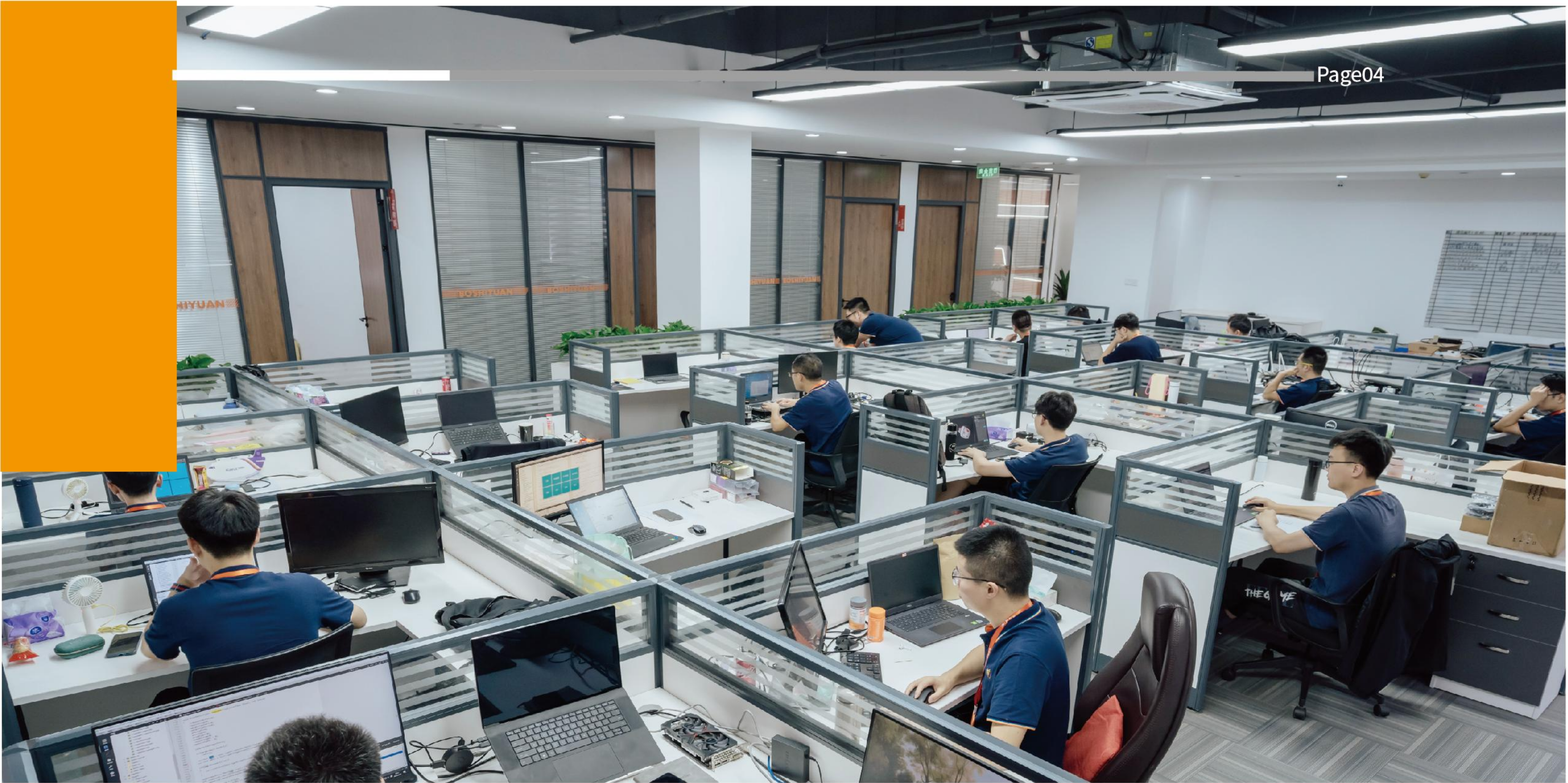
公司重视技术自主创新,设立基础技术研发部,与高校开展产学研合作,开放公司研发平台资源提供实训、培训,促进高校师生创新创业。目前公司通过自主研发已授权发明专利5项、实用新型专利10项、软件著作权27项。

未来公司将继续加大研发投入,与国内多所知名院校签署人才合作关系,以新鲜血液不断助力企业源源不断的创新动力,并深耕机器视觉领域的基础技术研发,打造一家以研发技术成果推动销售的研发型公司。

The company attaches great importance to independent technological innovation, establishes a basic technology research and development department, conducts industry university research cooperation with universities, opens up the company's research and development platform resources to provide practical training, and promotes innovation and entrepreneurship among university teachers and students. At present, the company has authorized 5 invention patents, 10 utility model patents, and 27 software copyrights through independent research and development.

In the future, the company will continue to increase research and development investment, sign talent cooperation relationships with multiple well-known domestic universities, continuously support the continuous innovation drive of the enterprise with fresh blood, and deeply cultivate basic technology research and development in the field of machine vision, creating a research and development oriented company that drives sales with research and development technology achievements.





软件著作权登记书

SOFTWARE COPYRIGHT REGISTRATION FORM

- ①博视源单相一体模具监视器系统v3.0.4
- ②博视源单相分体模具监视器系统v8.0.6
- ③博视源多相分体模具监视器系统v10.0.7
- ④博视源多相一体模具监视器系v10.5.1
- ⑤博视源贯流风叶定位检测系统v20.4.9
- ⑥博视源手机外框外观检测系统v20.3.3
- ⑦博视源字符检测系统v20.6.4
- ⑧博视源视觉检测系统v20.0.1
- ⑨博视源视印刷检测系统v20.45.7

-
- ① Boshiyuan single-phase integrated mold monitor system V3.0.4
 - ② Boshiyuan single-phase split mold monitor system V8.0.6
 - ③ Boshiyuan multiphase split mold monitor system V10.0.7
 - ④ Boshiyuan multiphase integrated mold monitor system V10.5.1
 - ⑤ Boshiyuan cross-flow fan blade positioning detection system V20.4.9
 - ⑥ Boshiyuan mobile phone frame appearance detection system V20.3.3
 - ⑦ Bossource character detection system V20.6.4
 - ⑧ Bossource visual detection system V20.0.1
 - ⑨ Boshiyuan printing detection system V20.45.7
-



专业证书与荣誉证书

Professional and Honorary Certificates

- 《软件产品登记证书-博视源单相一体模具监视器系统》
- 《实用新型专利证书-一种药瓶喷头的自动检测设备》
- 《发明专利证书-一种针对嵌件注塑的模具保护器及其实现方法》
- 《2022年度厦门市成长型中小微企业》
- 《厦门市科技小巨人领军企业》
- 《厦门市专精特新小微企业》

Software Product Registration Certificate - Boshiyuan Single Phase Integrated Mold Monitor System
Utility Model Patent Certificate - An Automatic Detection Equipment for Medicine Bottle Spray Heads
Invention Patent Certificate - A Mold Protector for Injection Molding of Embedded Parts and Its Implementation Method
2022 Growth oriented Small and Medium sized Enterprises in Xiamen City
Xiamen Science and Technology Little Giant Leading Enterprise
Xiamen Specialized, Refined, Special, New, Small and Micro Enterprises



企业产品线 | Enterprise Product Line

标准产品 | Standard products



- 模具监视器 | Mold monitor
 - 模内监控 | 防压模必备设备
In mold monitoring | essential anti pressure equipment
 - 功能强大 | 嵌入AI模型, 精准识别模内异常
Embedding AI models to accurately identify anomalies within the model
 - 操作安全 | 人脸识别, 权限管理分明
Operational Security | Facial Recognition, Clear Permission Management
 - 技术领先 | 温度监控&无线操作&MES系统
Leading Technology | Temperature Monitoring&Wireless Operation&MES

AOI智能全检设备 | AOI intelligent full inspection equipment



- 将非标设备模块化
Modularize non-standard equipment
- 标准化生产和组装
Standardized production and assembly
- 调试更快 | 费用更低
Faster debugging | lower cost

一键闪测仪 | One button flash tester



- 抽检型测量设备
Sampling type measuring equipment
- 一键操作出数据
One click operation to output data
- 产品兼容性强
Strong product compatibility
- 精度高
High precision
- 拼接视野成像&双视野成像
Splicing field of view imaging & dual field of view imaging

非标产品 | Non-standard products

通用视觉算法平台 | Universal Visual Algorithm Platform

纯视觉方案
Pure visual solution

嵌入多种用户生产线
Embed multiple user production lines

生产线赋能机器视觉功能
Empowering machine vision functions on production lines



定制非标自动化设备 | Customized non-standard automation equipment

根据客户需求定制非标设备
Customizing non-standard equipment according to customer needs



产品缺陷检测
Product defect detection

尺寸测量
Dimensional measurement

OCR识别
OCR recognition

定位抓取
Positioning and Grasping

整列摆盘
Whole row swing plate

计数打包
Count packaging

模具监视器

Mold monitor

模内精准监控

Accurate monitoring within the mold

模具监视器是利用视觉对比功能和检测功能对影像数据进行实时计算,对设备运行情况进行实时监视,是非接触式的防止压模或是防止设备出现其他损伤的完美解决方案,其具有易学、易用,灵活多变,不受行业及地域现在的特点。

The mold monitor utilizes visual contrast and detection functions to perform real-time calculations on image data, monitor equipment operation in real-time, and is a non-contact perfect solution to prevent mold pressing or other damage to equipment. It is easy to learn, easy to use, flexible and versatile, and not affected by the current characteristics of industries and regions.

8大特色 Eight Core Advantages

三代+五代+六代 | 3rd, 5th & 6th



人脸识别, 操作权限管理更安全

Facial recognition for secure operation access control



用平板&手机来无线监控模具

Wireless mold monitoring via tablet & smartphone



一台移动端或一个PC端可以监控、操作与管理数十台模具生产

One mobile/PC device monitors & controls dozens of molds



可组建车间MES系统

Workshop Manufacturing Execution System compatible



传统视觉+AI模型算法, 模内检测识别率更高

CV+AI algorithms for higher mold inspection accuracy



模具温度异常可监控

Real-time abnormal temperature monitoring



可纠正模具开合抖动影响下的10mm影像误差

Compensates 10mm imaging errors from mold vibration



自研完整算法BSYVisionLib, 国际领先检测精度, 周期响应时间0.05s

Proprietary BSYVisionLib: 0.05s response, world-leading precision

第六代智能模具监视器 BSY-2000

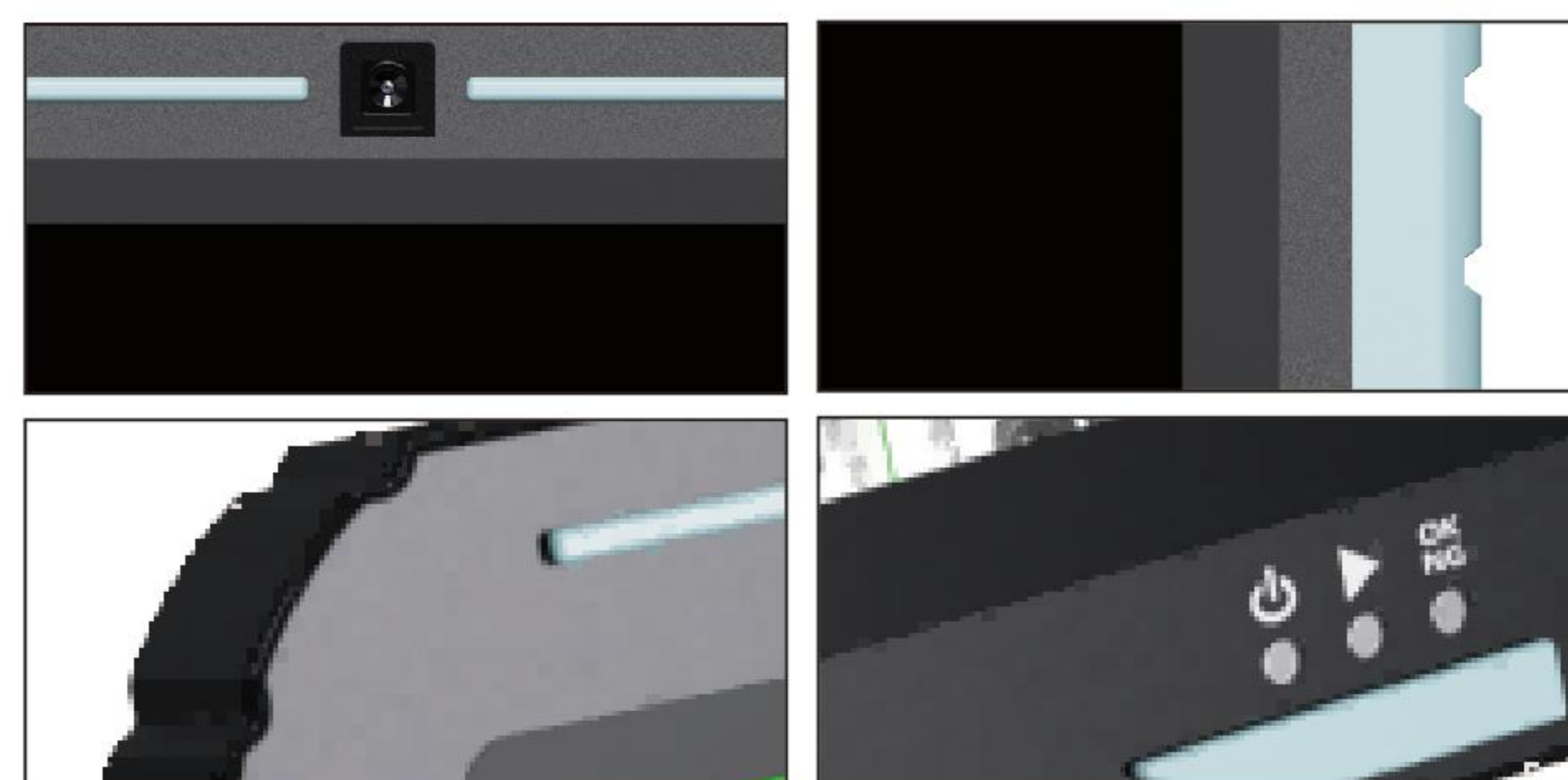
The sixth generation intelligent mold monitor



配备人脸解锁模块: 可区分人员权限和记录不同人的操作记录
Face Unlock Module: Tracks operator permissions and logs individual actions

全新设计造型: 双材质拼接更有科技感、持握更安全
New Design: Dual-material construction for enhanced grip and futuristic aesthetics

产品细节 | Product Details Display



屏幕升级: 14寸大屏, 屏占比提升50%
Upgraded Display: 14-inch screen with 50% higher screen-to-body ratio

CPU升级, AI模型检测算法提升3倍
Upgrade: AI Detection Algorithm 3x Faster

第五代模具监视器 SC-1000

Fifth generation mold monitor



1. 硬件成本下降: 自研智能相机, 可成像和计算, 无需配置主机
2. 人力成本下降: 一人可监控 ≥ 20 台设备
3. 操作体验感提升: 采用app+平板/手机无线监控和操作所有终端, 更安全、更智能
4. 管理效率提升: app后台实时记录数据并图形化显示, 形成自有MES系统
5. 设备可持续升级: OTA远程更新主机和相机程序, 功能越用越多

1. Hardware cost reduction: Self-developed smart camera with imaging and computing capabilities, eliminating host PC configuration
2. Labor cost reduction: Single operator capable of monitoring ≥ 20 devices
3. Operation experience enhancement: Wireless monitoring and control via app + tablet/mobile, safer and smarter
4. Management efficiency improvement: Real-time data recording and graphical display in app backend, forming proprietary MES
5. Sustainable device upgradability: OTA remote updates for host and camera programs, with increasing functionality

第三代模具监视器 BSY-1000

Third generation mold monitor



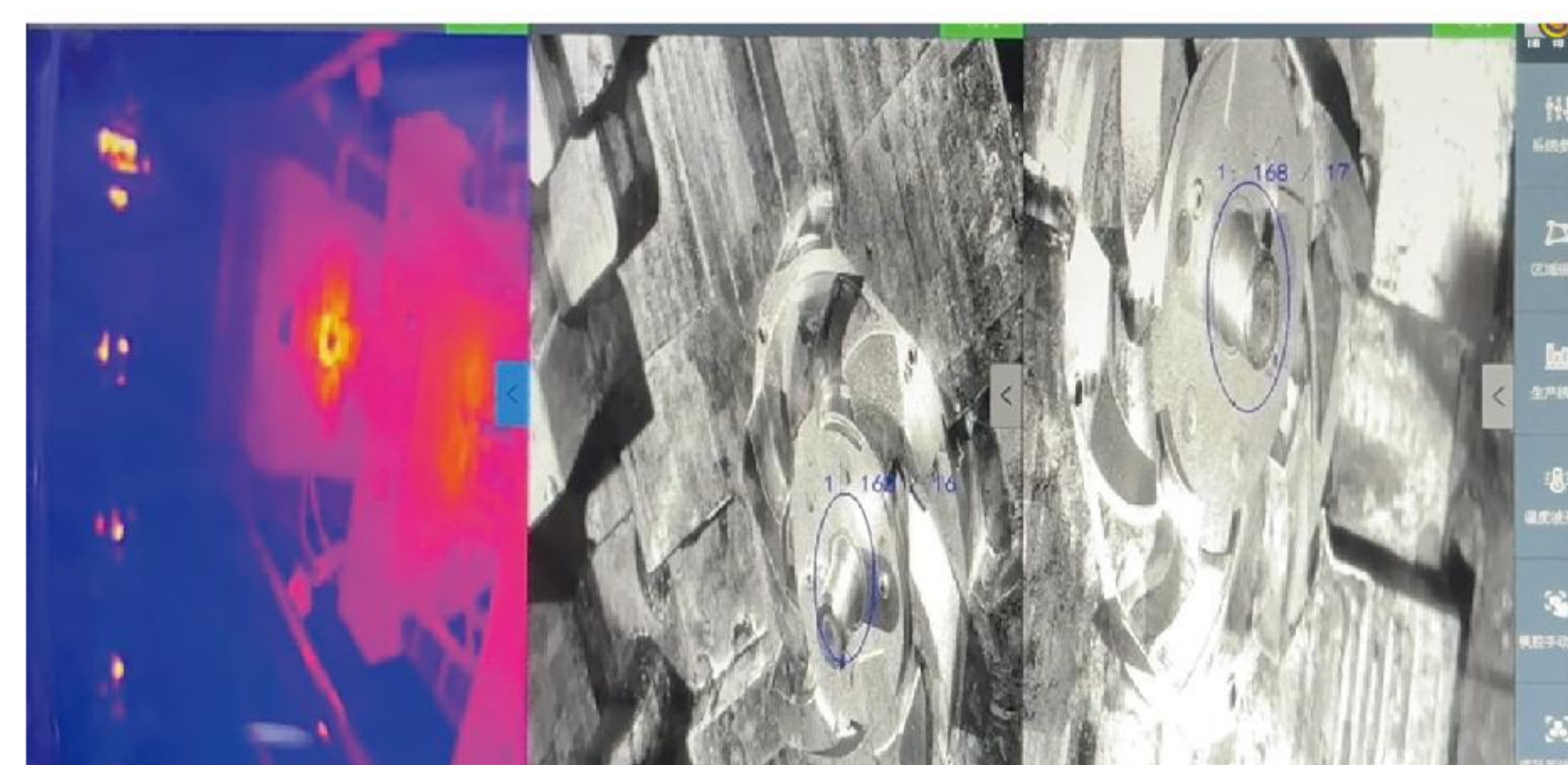
大数据管理系统
后台数据管理+终端相连=组建车间MES系统
Big Data Management
Backend + Terminal Integration = Build Workshop MES

软件版本完整
4年内数十次更新=更少卡顿和死机
Robust Software
50+ Updates in 4 Years = Smoother Operation

模具温度监控
热敏相机+模具温度监控功能模块=监控模具异常导致的物料变形
Thermal Monitoring
IR Camera + Module = Real-time Material Deformation Detection

第三代模具监视器热成像款 BSY-T900

Third generation mold monitor thermal imaging model



AOI智能全检设备

AOI Intelligent Full Inspection Equipment

将非标设备标准化
Standardize non-standard equipment

基于用户对自动化视觉检测设备的造价、效果和验收时间的的高要求,我司提出将非标设备标准化的理念,即将非标设备各组件分解成多个模块,再进行标准化生产,即可根据需求快速组装设备,满足客户需求。

Based on the high requirements of users for the cost, effectiveness, and acceptance time of automated visual inspection equipment, our company proposes the concept of standardizing non-standard equipment, which means that each component of non-standard equipment is decomposed into multiple modules, and then standardized production can be carried out to quickly assemble equipment according to needs and meet customer needs.



软件模块
Software module

上下料模块
Loading and unloading module

外形模块
Appearance module

视觉模块
Visual module

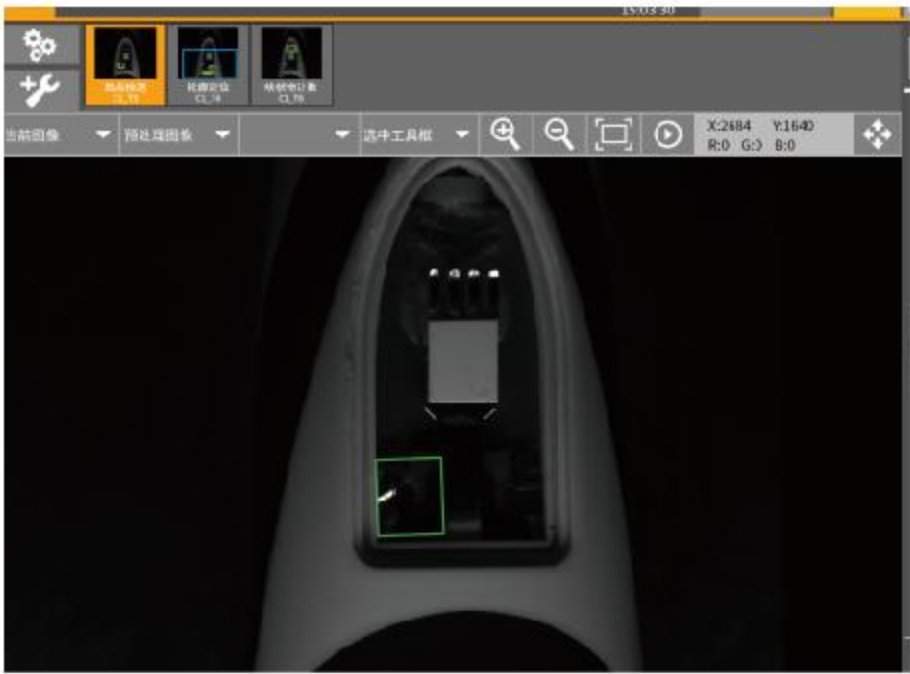
四大模块组成 | Composition of four major modules

<div>01</div>	<div>02</div>	<div>03</div>	<div>04</div>
<div>软件模块 Software module</div> <div>①将通用视觉算法与AI算法结合,精度与效率大幅提升。 ②人机交互优化,软件可直接控制相关硬件。 ③深度学习算法更新,数据更精准。 ④完善操作方式。 ① Combining universal visual algorithms with AI algorithms significantly improves accuracy and efficiency. ② Human computer interaction optimization, software can directly control related hardware. ③ Deep learning algorithm updates for more accurate data. ④ Improve operational methods.</div>	<div>上下料模块 Loading and unloading module</div> <div>①用于设备上的物料平稳运输,通常与直振配合上料。 ②将产品以一定的角度或位置上料。 ① Used for smooth transportation of materials on equipment, usually combined with direct vibration for loading ② Load the product at a certain angle or position</div>	<div>外形模块 Appearance module</div> <div>①定制通用外形,统一性高。 ②同一外形,维修简单,减少成本。 ① Customized universal appearance with high uniformity. ② Same appearance, simple maintenance, and reduced costs.</div>	<div>视觉模块 Visual module</div> <div>①可以实现自动调节相机参数。 ②可以根据成像效果自动调节光源高度。 ③切换相机和光源更便捷。 ④检测多面缺陷。 ① Can achieve automatic adjustment of camera parameters. ② The height of the light source can be automatically adjusted based on the imaging effect. ③ Switching cameras and light sources is more convenient. ④ Detect multiple surface defects.</div>

AOI视觉检测在行业中的应用 | The Application of AOI Visual Inspection in the Industry



电子手柄
Electronic handle



检测图
Detection diagram

检测内容：①检测是否缺角②检测焊锡连接是否异常

Detection content:① Check whether the angle is missing; ② check whether the solder connection is abnormal



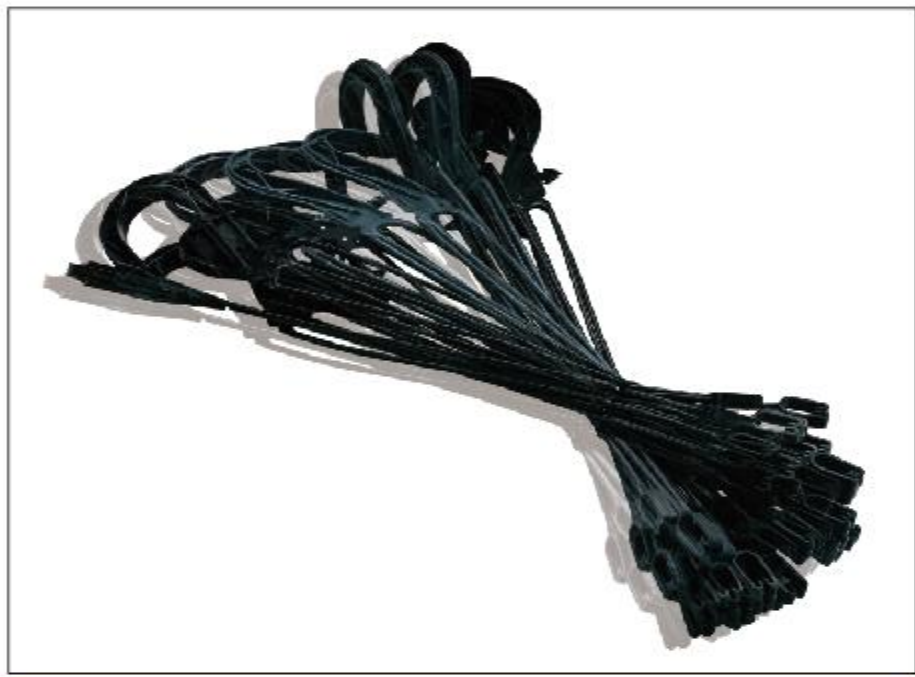
树脂电阻
Resin resistance



检测图
Detection diagram

检测内容：①检测缺陷异常种类

Detection content:①Types of detected defects



塑料花篮配件
Plastic flower basket accessories



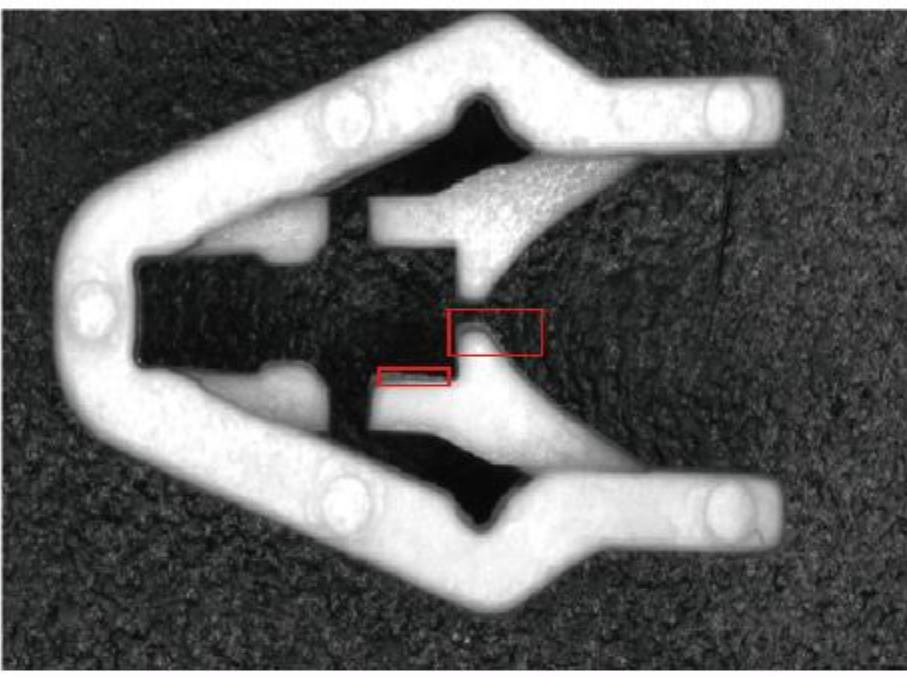
检测图
Detection diagram

检测内容：①检测是否压伤②检测是否划伤

Detection content:① Check whether it is crushed ;② heck whether it is scratched



塑料工件
Plastic workpiece



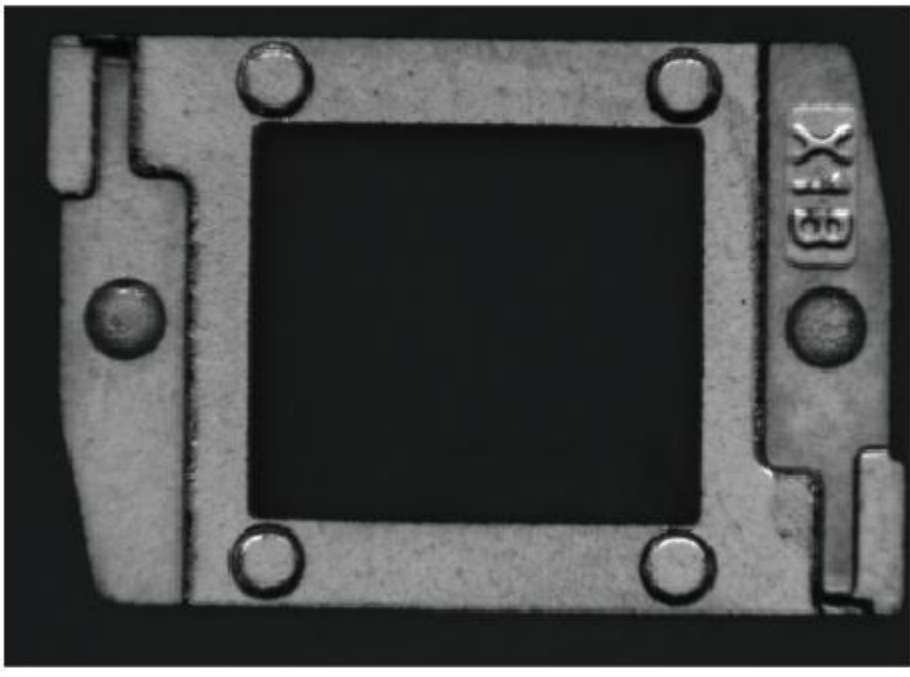
检测图
Detection diagram

检测内容：①检测是否缺料 ②检测是否有毛边

Detection content:① Check whether there is material shortage ;② Check whether there is burr



金属工件
Metal workpiece



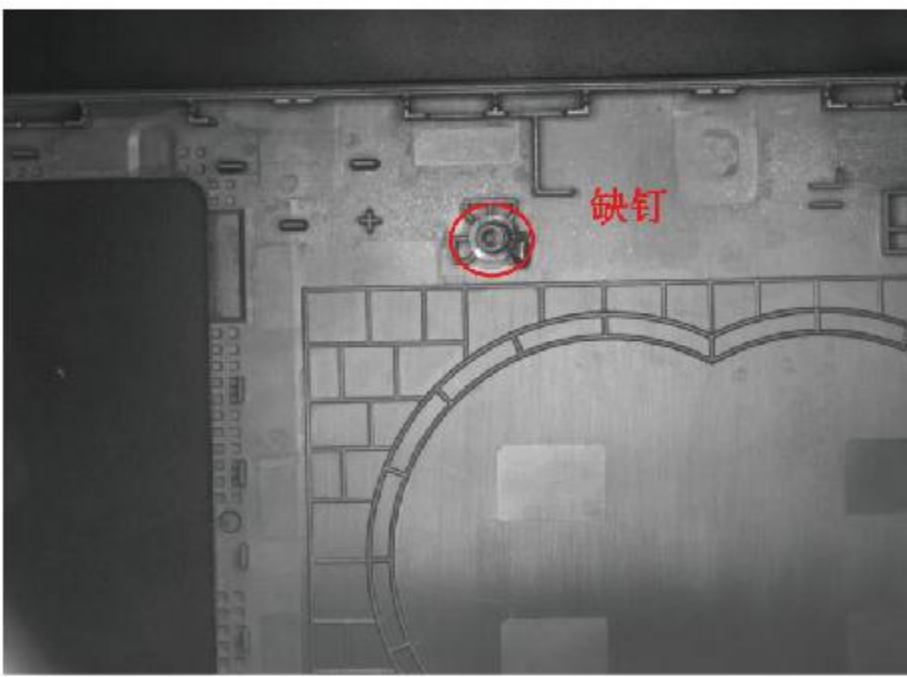
检测图
Detection diagram

检测内容：①检测凸点、凹坑、压、伤、缺损 ②检测内孔夹针、变形、鼓包、断裂 ③检测碰伤、混料、凹陷、定位孔异常

Detection content:① Detect bumps, pits, pressure, damage and defects; ② detect the pinch pin,deformation, bulge and fracture of the inner hole; ③ detect the bumps, mixed materials, dents and positioning hole abnormalities.



塑料电脑壳
Plastic computer case



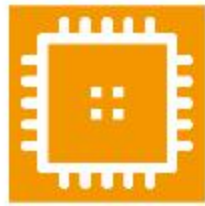
检测图
Detection diagram

检测内容：①检测螺钉异常种类

Detection content:① Detect types of abnormal screws

一键闪测仪

One button measuring instrument



2000万像素CMOS
20 million pixel CMOS



双工业远心摄像头
Dual industrial telecentric cameras

环形上光源
Circular upper light source



远心平行背光源
Far center parallel backlight



一键闪测仪替代了传统测量仪器如投影仪、影像测量仪、工具显微镜、轮廓仪、游标卡尺、千分尺等完美结合这些仪器多方面的功能,做到了真正意义上的一键测量。

The one click flash tester replaces traditional measuring instruments such as projectors, image measuring instruments, tool microscopes, profilometers, vernier calipers, micrometers, etc., perfectly combining the functions of these instruments to achieve true one click measurement.



BSY-V25



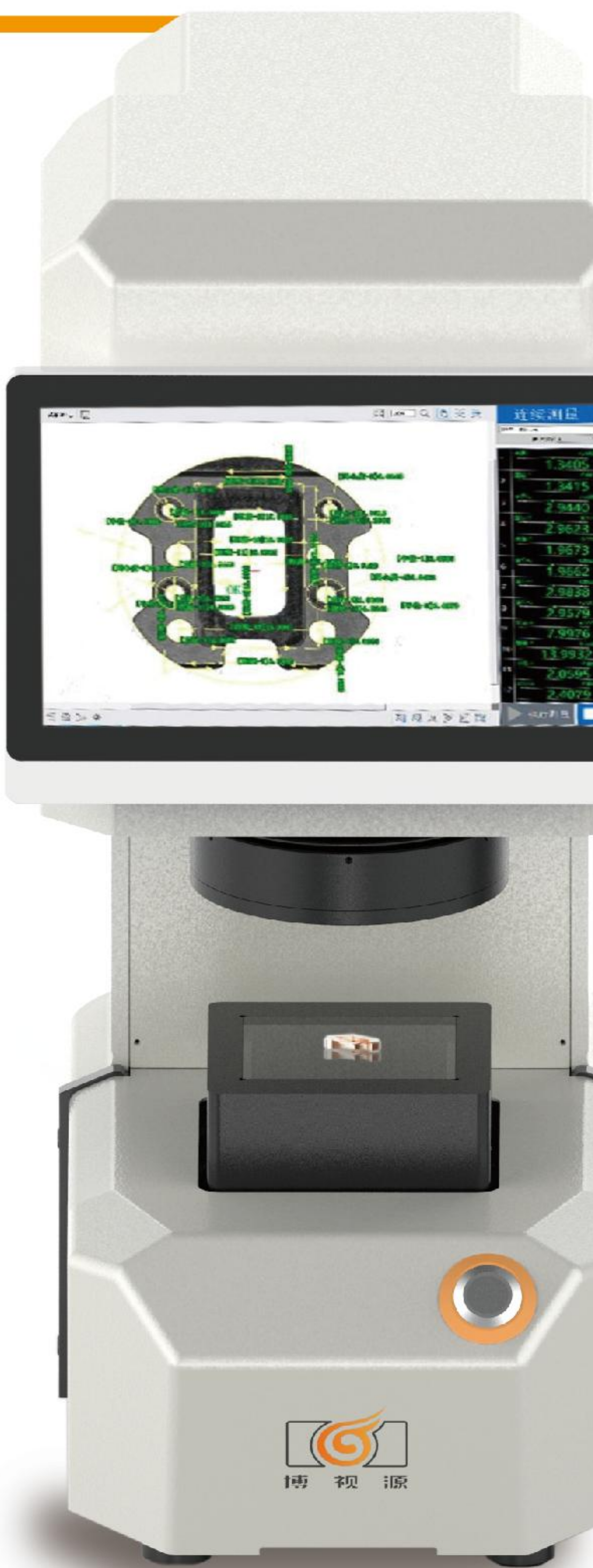
BSY-V150



BSY-H100



BSY-H150



测量精度高

采用设备标准值,精准选择测量边缘
自动照明,标准化照明条件
自动对焦,消除焦距误差

High measurement accuracy

Using equipment standard values to accurately select measurement edges
Automatic lighting, standardized lighting conditions
Auto focus, eliminating focal length errors

设定便捷

目标物画面清晰可视
可稳定标准化检测,无需微调
程序功能搭配简单易懂的引导帮助

Convenient settings

Clear and visible target image
Stable and standardized detection without the need for fine-tuning
Program function pairing with simple and easy to understand guidance and assistance

测量快速

无需任何目标物定位
可同时测量100个目标物
无需手动查找目标物对应工程
一键导出数据报表

Fast measurement

No need for any target object localization
Can measure 100 target objects simultaneously
No need to manually search for the corresponding project of the target object
One click export data report

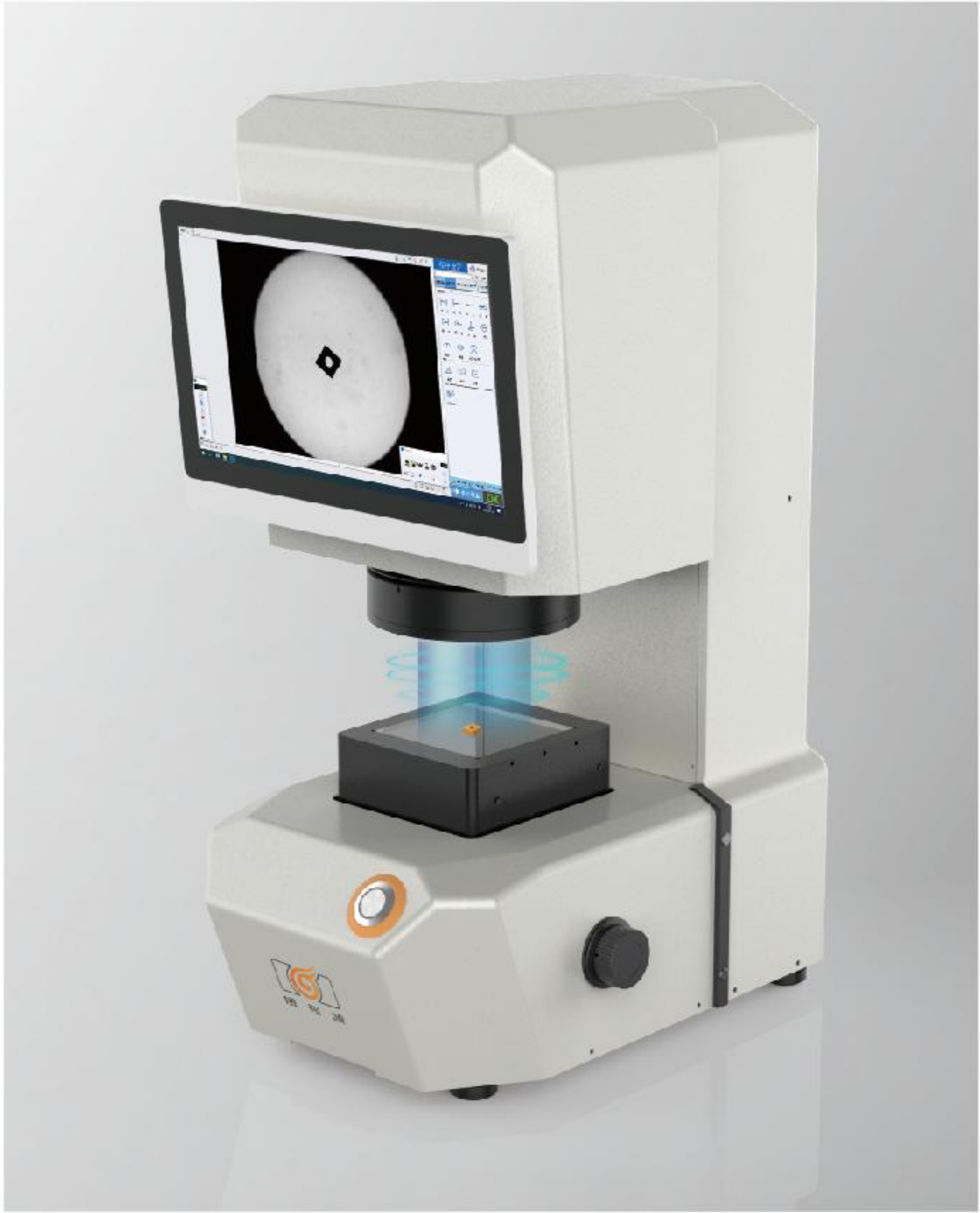


1	齿顶圆直径-1	-0.00
	0.13	84.6341
	-0.13	
2	齿根圆直径-1	-0.00
	0.13	79.9932
	-0.13	
3	齿距-1	-0.00
	0.13	178.3647
	-0.13	
4	齿厚-1	0.19
	0.13	92.6439
	-0.13	
5	齿数-1	0.00
	0.13	83.0000
	-0.13	
6	齿高-1	-0.00
	0.13	2.3205
	-0.13	

全新一键闪测仪 | A brand new one button measuring instrument

在单视野一键闪测仪的基础上，全新打造可自由切换视野的双视野一键闪测仪，以及可以测量大物件测量的拼接视野一键闪测仪，提高了单台设备在各类物件测量的兼容性和便捷性，极大程度上降低了采购成本。

On the basis of the single field of view one click measuring instrument, a new dual field of view one click measuring instrument with the ability to freely switch fields of view and a splicing field of view one click measuring instrument with the ability to measure large objects have been created, which has improved the compatibility and convenience of a single device in measuring various objects and greatly reduced procurement costs.



双视野一键闪测仪
Dual view one button measuring instrument

测量少量小工件时，可切换高精度模式，精度更高；测量大工件或同时测量多个小工件时，可切换广视野模式，使大工件的测量数据完整呈现、多件测量的效率更高。
When measuring a small number of small workpieces, high-precision mode can be switched for higher accuracy; When measuring large workpieces or simultaneously measuring multiple small workpieces, the wide field mode can be switched to present complete measurement data of large workpieces and improve the efficiency of multi piece measurement.

双相机
Dual camera

双视野
Dual field of view

测量更便捷
More convenient measurement

测量范围 Measuring range		测量精度 Measurement accuracy		重复精度 Repeatability	
广视野模式 Wide field of view mode	高精度模式 High precision mode	广视野模式 Wide field of view mode	高精度模式 High precision mode	广视野模式 Wide field of view mode	高精度模式 High precision mode
φ100	25×18mm	±2μm	±4μm	±2μm	±4μm

拼接款一键闪测仪
Spliced one button measuring instrument

拼接款机型相较于单次成像大视野机型，体型更小更便携。机型兼备拼接成像模式和双视野模式供用户选用。可实现最高300mm以内尺寸工件一键测量。

The splicing model is smaller and more portable compared to the single imaging large field model. The model has both splicing imaging mode and dual field of view mode for users to choose from. Can achieve one click measurement of workpieces up to 300mm in size.



测量范围 Measuring range		镜头视野 Lens field of view		重复精度 Repeatability	
广视野模式 Wide field of view mode	高精度模式 High precision mode	广视野模式 Wide field of view mode	高精度模式 High precision mode	广视野模式 Wide field of view mode	高精度模式 High precision mode
300×200mm	200×120mm	18.8×14.1mm	6.4×4.8mm	±1.5um	±1um

通用视觉算法平台

Universal Visual Algorithm Platform



软件介绍

Software introduction

我司自研通用视觉算法平台,是基于我司十多年来研发了数百个视觉算法后积累而成的成果。多年来各项算法经过市场验证而不断完善,版本迭代更新,现该平台已成熟稳定。AI算法深度学习的加入,更进一步提高了在视觉检测时的精度和效率、大幅降低误报。

Our self-developed universal visual algorithm platform is based on the accumulation of hundreds of visual algorithms developed by our company over the past decade. Over the years, various algorithms have been continuously improved and iterated through market validation, and the platform is now mature and stable. The addition of AI algorithm deep learning further improves the accuracy and efficiency in visual detection, and significantly reduces false positives.

使用场景

Usage scenario

视觉算法
+
视觉模组

Visual algorithm
+
Visual module

实现视觉与用户流水线结合,性价比高,占用空间小,改造成本低。

Realize the combination of visual and user assembly lines, with high cost-effectiveness, small space occupation, and low renovation costs.

视觉算法
+
自动化机构

Visual algorithm
+
Automation institutions

组成非标设备和AOI视觉检测设备
实现自动上下料和自动摆盘/剔除等功能,进一步降低人力成本并提升生产效率。

Composition of non-standard equipment and AOI visual inspection equipment
Realize functions such as automatic loading and unloading, automatic disc swinging/removal, further reducing labor costs and improving production efficiency.

主要功能介绍

Main Function Introduction

视觉主要功能

Main visual functions

尺寸测量
Dimensional measurement

OCR识别
OCR recognition

外观检测
Visual Inspection

定位抓取
Positioning and Grasping

自动化机构主要功能

Main functions of automation institutions

不良品剔除
Defective product elimination

自动摆盘
Automatic disc swing

自动打包
Automatic packaging

自动上料
Automatic feeding

软件可通过在运动控制器中写入控制代码,结合直观的人机交互UI设计,配合伺服电机对设备的物理控制,可实现对曝光、机内调焦、镜头距离的自动调整,达到一键自动调节视觉硬件的远程运动控制。同时,我司自主研发的柔性振动盘系统,可以帮助机械手准确定位抓取。在软件上我司内置多重安全逻辑,大幅降低机械手操作失误率。

The software can achieve automatic adjustment of exposure, internal focusing, and lens distance by writing control code into the motion controller, combined with intuitive human-computer interaction UI design and physical control of the device with servo motors, achieving remote operation control of visual hardware with one click automatic adjustment. At the same time, our independently developed flexible vibration disk system can help the robotic arm accurately locate and grasp. Our company has built-in multiple safety logic in the software, greatly reducing the error rate of robotic arm operation.



指定行业非标设备

| Designated industry non-standard automation

引领行业发展 开启自动化生产时代

Leading the development of the industry and ushering in the era of automated production



医疗行业

AI吸塑包装检测机

博视源为医疗设备生产商定制的注射器后道吸塑包装生产线外观检测。具备AI深度学习算法,可检测吸塑包装内的细小毛发、油污、产品外观异常等。

Medical industry

AI vacuum packaging inspection machine

Bosiyuan conducts visual inspection on the injection molding packaging production line customized for medical equipment manufacturers. Equipped with AI deep learning algorithms, it can detect small hairs, oil stains, and abnormal product appearance inside vacuum packaging.



医疗行业

自动打包机

博视源为医疗设备生产商定制的注射器自动打包生产线,根据视觉定位包装后的抓取产品,放入纸盒并自动合盖,实现产品包装智能自动化。

Medical industry

Automatic packing machine

Bosiyuan is a customized syringe automatic packaging production line for medical equipment manufacturers. Based on visual positioning, the products are grabbed, placed in paper boxes, and automatically closed, achieving intelligent and automated product packaging.



3C电子行业

耳机舱二维码检测机

博视源为蓝牙耳机生产商定制的耳机舱印刷符文检测,用于内部二维码、串码等OCR识别和印刷质量检测。

3C Electronics Industry

Headphone compartment QR code detection machine

Boshiyuan is a customized headphone compartment printing rune detection tool for Bluetooth headphone manufacturers, used for internal QR code, serial code, and other OCR recognition and printing quality inspection.



3C电子行业

摄像头模组外观检测机

用于检测该金属配件外观16个面的开裂、缺料压伤、粘料、划伤、变形等外观异常,以及对配件商模号的识别读取。

3C Electronics Industry

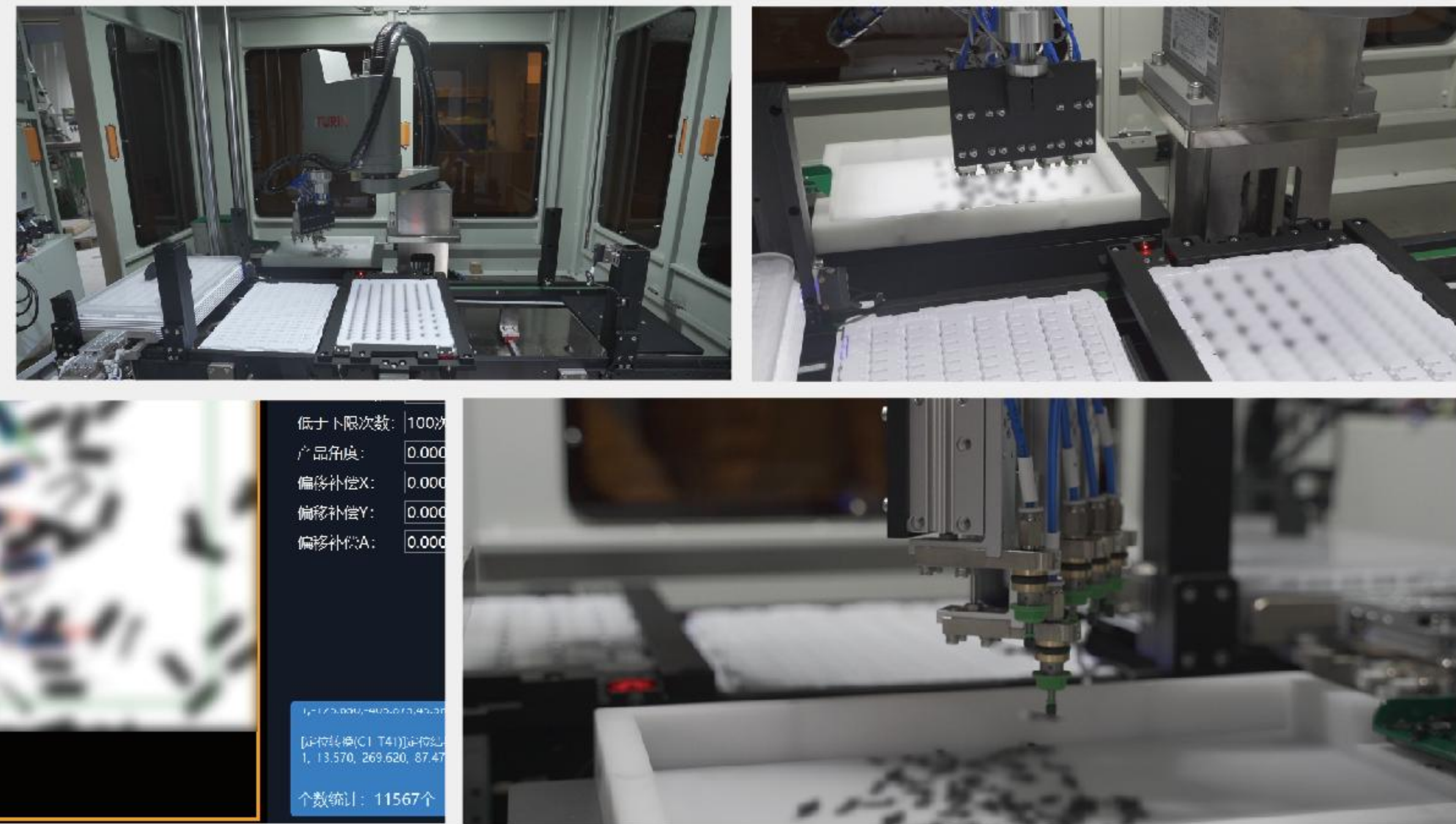
Camera module appearance inspection machine

Used to detect appearance abnormalities such as cracking, material shortage, pressure damage, sticking, scratching, and deformation on 16 surfaces of the metal accessory, as well as to identify and read the accessory manufacturer's model number.

柔性振动盘自动化设备

我司自研的柔性振动盘系统,应用于细小且大量的工件进行陈列摆盘。一键标定,操作更便捷。采用全新通讯逻辑,运行更高效。

Our self-developed flexible vibration disk system is used for displaying and swinging small and large quantities of workpieces. One click calibration for more convenient operation. Adopting new communication logic for more efficient operation.



*由于产品保密性限制,故采取模糊处理
*Due to product confidentiality restrictions, fuzzy processing is adopted

- 技术参数 | Technical Parameter
- 1.来料状态:散料 2.CT要求:8pcs/13s

3:产品不能划伤 4:吸塑盒自动收料

5:机故率<1% 6:良率>99.5%
1. Incoming status: loose material

2. CT requirement: 8PCS/13s

3: Product cannot be scratched

4: The vacuum box automatically receives materials

5: Machine failure rate<1%

6: yield rate>99.5%

合作客户 (部分)

Cooperative clients (partial)



COMPANY

严格把控 合作共赢

Strictly control

Win win cooperation

博视源 期待您的来访

Waiting for you

